



## TAD – 12AU7A/ECC82 High Performance Medium-Mu Twin Triode

The TAD™ 12AU7A/ECC82 Premium Selected in its latest revision with pleasing sonical performance and rich tone.

This TAD™ 12AU7A/ECC82 has strong systems which are selected to provide two symmetric triodes as for stereo applications or ideal balanced driver stage; perfect choice for HiFi stereo applications and as driver stage.

The TAD™ 12AU7A/ECC82 is a direct replacement for also E82CC, ECC802, 6N10, 6189W, 5814A and others.

### Characteristics of a bogey tube:

| Electrical                                  |              |                         |
|---|--------------|-------------------------|
| Heater:                                     | Series       | Parallel                |
| Voltage (AC or DC)                          | 12.6V +/-1.0 | 6.3+/-0.5               |
| Current                                     | 0.15         | 0.3                     |
| Heating                                     |              | Indirect                |
| Cathode-to-heater potential, max.           |              | 180 V                   |
| Direct interelectrode capacitances, max.*** |              |                         |
| Grid to plate                               |              | 1.4 pF                  |
| Grid to cathode                             |              | 1.8 pF                  |
| Grid to heater                              |              | 0.2 pF                  |
| Plate to cathode                            |              | 0.3 pF                  |
| Mechanical                                  |              |                         |
| Operating Position                          |              | Any                     |
| Base  |              | E9-1, Small Buton 9 Pin |
| Dimensions:                                 |              |                         |
| Height                                      |              | 57 mm                   |
| Seated height                               |              | 50 mm                   |
| Diameter                                    |              | 22.7 mm                 |
| Cooling                                     |              | conventional            |
| Approximate net weight                      |              | 13 g                    |

\*\*\*Without external shielding, nominal values

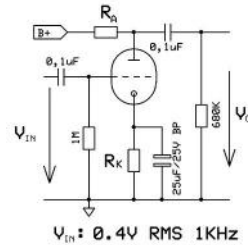
### AF Power Amplifier

| Maximum ratings                          |        |
|--|--------|
| DC plate voltage                         | 330 V  |
| Positive DC Grid Voltage                 | 0 V    |
| Negative DC Grid Voltage                 | -100 V |
| Cathode Current                          | 20 mA  |
| Plate dissipation                        | 2.75 W |
| Bulb temperature (surface hottest point) | 200°C  |

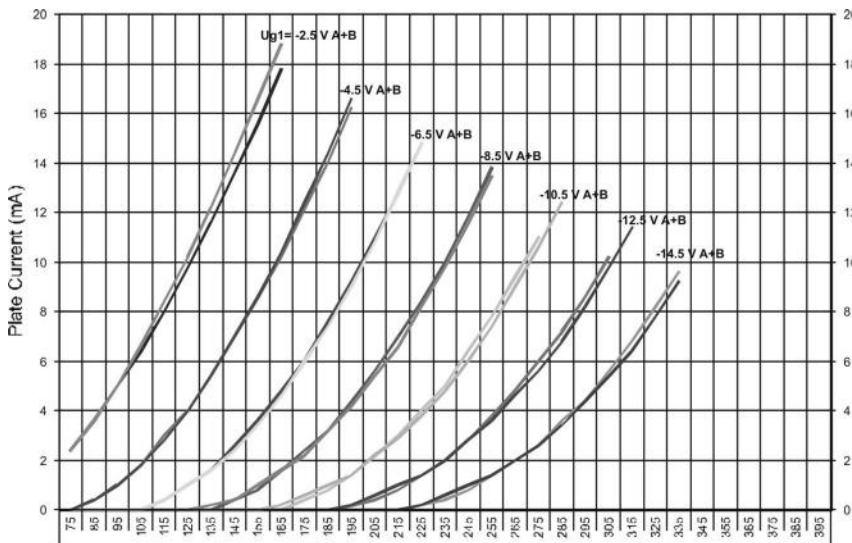
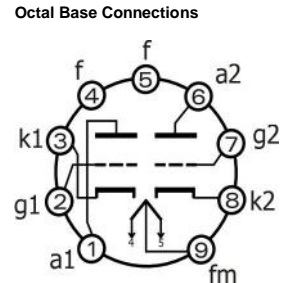
### RT005, 12AU7A/ECC82

| B+ / V | R <sub>A</sub> / kΩ | R <sub>K</sub> / kΩ | V <sub>Out</sub> / V <sub>RMS</sub> | V <sub>Out</sub> / V <sub>IN</sub> | THD / % | I <sub>A</sub> / mA |
|--------|---------------------|---------------------|-------------------------------------|------------------------------------|---------|---------------------|
| 200    | 47                  | 1,20                | 6,5                                 | 16,3                               | 0,6     | 2,3                 |
| 250    | 47                  | 1,20                | 6,6                                 | 16,5                               | 0,5     | 3,0                 |
| 300    | 47                  | 1,20                | 6,6                                 | 16,5                               | 0,4     | 3,6                 |
| 350    | 47                  | 1,20                | 6,7                                 | 16,8                               | 0,3     | 4,3                 |
| 400    | 47                  | 1,20                | 6,8                                 | 17,0                               | 0,3     | 5,0                 |
| 200    | 100                 | 2,20                | 6,6                                 | 16,5                               | 0,7     | 1,2                 |
| 250    | 100                 | 2,20                | 6,7                                 | 16,8                               | 0,6     | 1,6                 |
| 300    | 100                 | 2,20                | 6,8                                 | 17,0                               | 0,5     | 1,9                 |
| 350    | 100                 | 2,20                | 6,8                                 | 17,0                               | 0,4     | 2,2                 |
| 400    | 100                 | 2,20                | 6,9                                 | 17,3                               | 0,3     | 2,5                 |
| 200    | 220                 | 3,90                | 6,5                                 | 16,3                               | 0,7     | 0,6                 |
| 250    | 220                 | 3,90                | 6,6                                 | 16,5                               | 0,6     | 0,8                 |
| 300    | 220                 | 3,90                | 6,7                                 | 16,8                               | 0,5     | 1,0                 |
| 350    | 220                 | 3,90                | 6,8                                 | 17,0                               | 0,4     | 1,1                 |
| 400    | 220                 | 3,90                | 6,8                                 | 17,0                               | 0,4     | 1,3                 |

### Test arrangement:



### Bottom View



### Outline View

